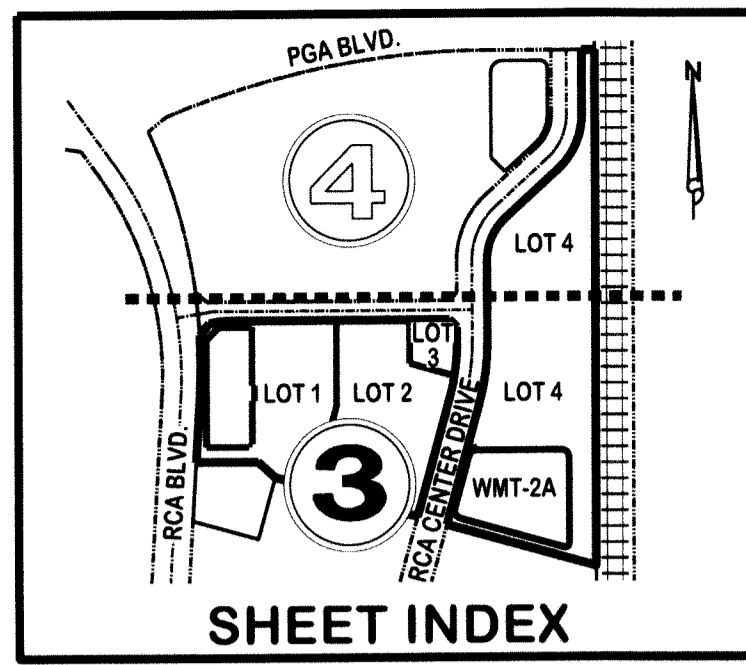


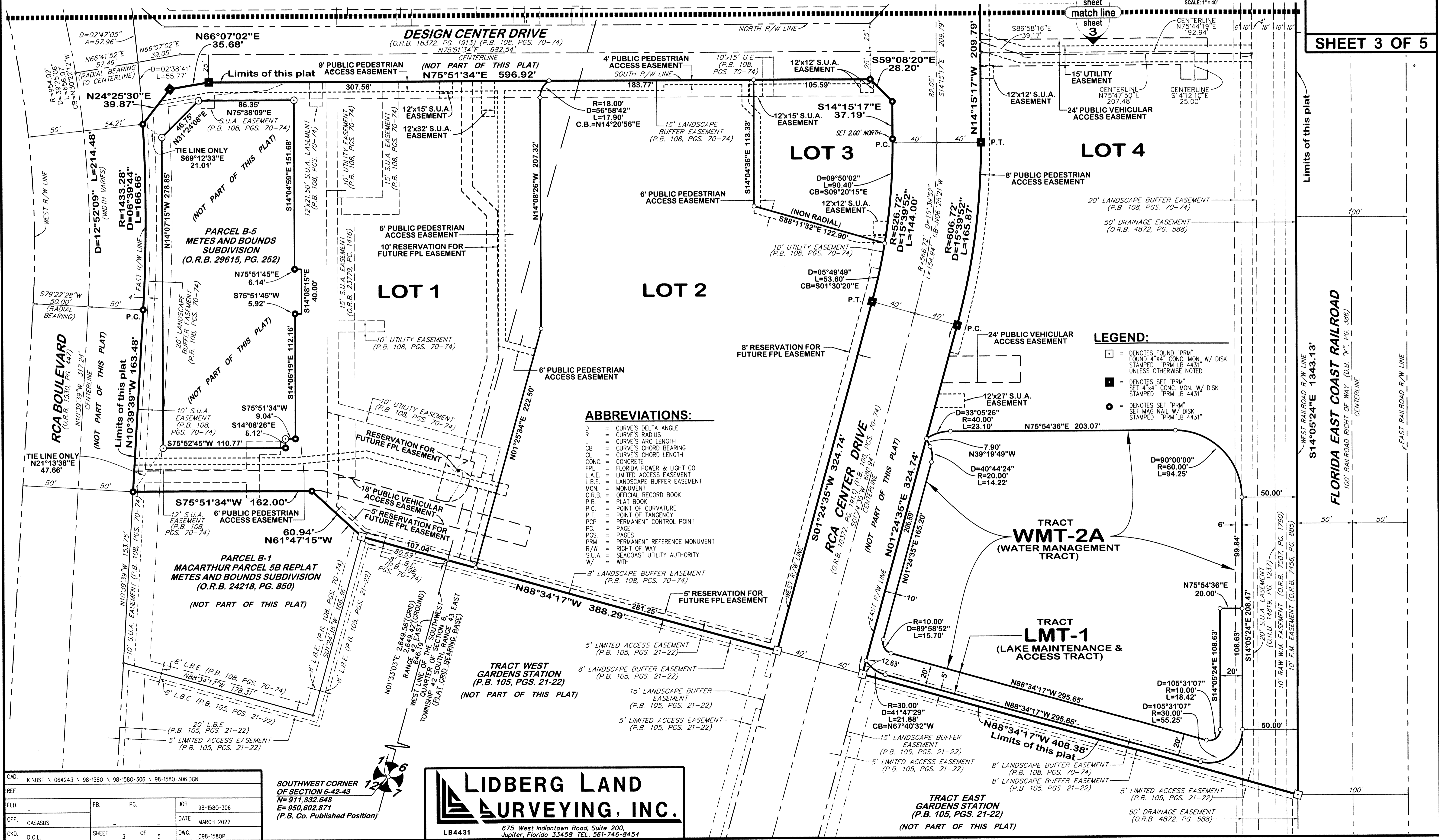
# PGA STATION, A P.U.D.

BEING A REPLAT OF PARCEL C AND WATER MANAGEMENT TRACT WMT-2, AS SHOWN ON THE PLAT OF MACARTHUR PARCEL 5B-REPLAT, RECORDED IN PLAT BOOK 108, PAGES 70 THROUGH 74, AND ALSO BEING A REPLAT OF PARCELS B, B-3 AND B-4, AS SHOWN ON THE METES AND BOUNDS SUBDIVISION RECORDED IN OFFICIAL RECORD BOOK 29615, PAGES 252 THROUGH 288, PUBLIC RECORDS OF PALM BEACH COUNTY, FLORIDA AND ALSO LYING IN SECTION 1, TOWNSHIP 42 SOUTH, RANGE 42 EAST AND SECTION 6, TOWNSHIP 42 SOUTH, RANGE 43 EAST CITY OF PALM BEACH GARDENS, PALM BEACH COUNTY, FLORIDA

APRIL 2022



168



SHEET 3 OF 5

CAD: K:\UST \ 064243 \ 98-1580 \ 98-1580-306 \ 98-1580-306.DGN			
REF.	FB.	PG.	JOB
			98-1580-306
OFF.	CASASUS		DATE
			MARCH 2022
CKD.	D.C.L.	SHEET 3 OF 5	DWG. 098-1580P

**SOUTHWEST CORNER**  
 OF SECTION 6-42-43  
 N=917,332.648  
 E=950,802.871  
 (P.B. Co. Published Position)

**LIDBERG LAND SURVEYING, INC.**  
 LB4431 675 West Indiantown Road, Suite 200, Jupiter, Florida 33458 TEL. 561-746-8454